



GFI FAXmaker

for Networks/SMTP
Network fax for Windows

Faxing manually is out of date. Research shows that a professional fax server can save your organization substantial costs, while improving your customer service and image. GFI FAXmaker for Networks/SMTP is an enterprise quality fax server that delivers on this promise. With more than 70,000 fax servers shipped since its launch, GFI FAXmaker is an industry leader when it comes to reliability, robustness, ease of use and administration, and price.

GFI FAXmaker for Networks/SMTP is a network fax solution for Windows networks that allows all network users to send and receive faxes right from their desktop. GFI FAXmaker for Networks/SMTP includes clients for all Windows OS versions and works with most popular mail servers and fax devices. GFI FAXmaker also includes an email-to-fax and email-to-sms gateway, allowing all email users to send and receive faxes and SMS messages* from their favorite email application. GFI FAXmaker for Networks/SMTP integrates with an SMTP/POP3 mail server or Lotus Notes. *Only applicable in areas with a GSM network (Europe/Asia).

FEATURES FOR THE USER

Fax from any Windows application

No matter which Windows application is used, anything a user creates can be faxed. The user simply prints the document to the GFI FAXmaker printer. Files, for instance a product brochure, can also be attached to the fax. Users can customize their own cover page incorporating a company logo and even their own signature.

Supports Outlook Contacts

There is no need to keep a separate fax address book - just select the recipient's "Business Fax" entry from the Outlook Contacts list or the Global Address Book. In this way you do not need to duplicate address entries. Also, because fax recipients appear in the email address book, users can interchange fax and email addresses, making it easy for the user to broadcast information to a number of people, whether they have an email or a fax address.

Note: If you have Microsoft Exchange Server, use GFI FAXmaker for Exchange.

Features & benefits

Minimal administration and user training required

The most popular fax server, voted #1 by Windows & .NET readers 2 years running

Supports Microsoft Outlook address book and logging of faxes in sent items

Unbeatable pricing: \$495 for 20 users \$1850 for 100 users.

Windows XP/2000/NT & ME/98/95 client fax software

GFI FAXmaker includes fax client software and printer drivers for all Windows platforms. The GFI FAXmaker fax client has a user-friendly interface. It features a multi-user network phone book (although you can use the Outlook Contacts list if you have Outlook), a fax manager with the ability to create fax folders, a viewer with annotation capabilities and more.

Attach any Office document

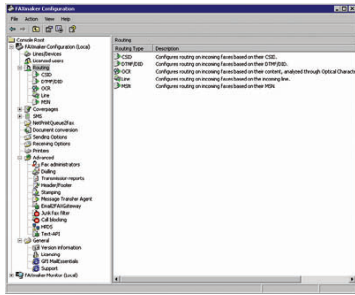
Users can attach any Office document to their message. This document is then rendered to fax format at the fax server and faxed out. A document can also be faxed using the "Send File" command, which is available in all Microsoft Office applications and many others. (This feature requires installation of the Email2Fax Gateway.)

Send SMS messages from your desktop

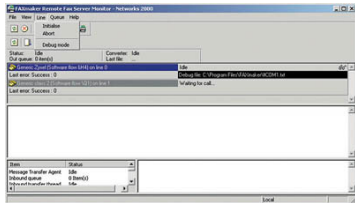
GFI FAXmaker's SMS gateway enables network users to send SMS messages from their desktop; this allows them to easily contact business colleagues and associates who are on the road or away from their desk. Using the SMS gateway rather than a mobile phone is faster (no need to use the phone pad) and saves users the cost of the SMS message.

Automatic application integration & mail merges with NetPrintQueue2FAX

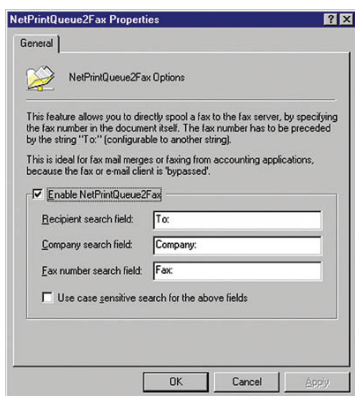
GFI FAXmaker's NetPrintQueue2FAX feature allows you to embed a fax number in a document and "print to fax" from almost any application, from anywhere in the network - without having to enter the fax number separately in the GFI FAXmaker fax form or Outlook. This feature is especially handy for accounting applications; a fax can be sent simply by embedding the fax number in the document, for example an invoice. No application integration or development is required. Furthermore, you can now send fax broadcasts from the standard Microsoft Word Mail Merge feature.



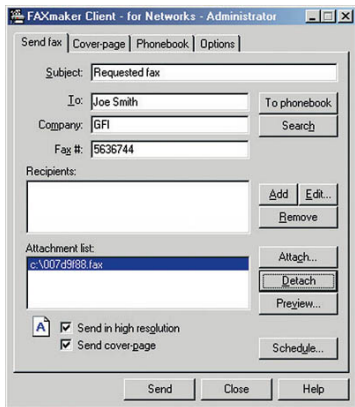
GFI FAXmaker configuration



The FAXmaker server monitor



Easy application integration using NetPrintQueue2FAX



The Windows XP/2000/NT/98/95 Client



View and annotate faxes in the fax viewer

Fax annotation

Incoming faxes can be edited. This gives users the possibility to stamp their "Approval" on faxed documents or add their own comments. The edited faxes can then be returned or routed to another recipient.

Transmission reports

After sending a fax, users can automatically receive a transmission report. GFI FAXmaker can also automatically print transmission reports and miniature print-outs of each fax sent. If using an email client, fax transmission reports are sent by email.

Fax broadcasting using Microsoft Office Mail merge

Using the mail merge facility of Microsoft Word/Office, you can send personalized fax broadcasts to any number of users. Because Microsoft Office supports ODBC, the recipient list can be retrieved from any data source, including Microsoft SQL Server, Microsoft Access and many more.

FEATURES FOR THE ADMINISTRATOR

GFI FAXmaker: The zero admin fax server!

GFI FAXmaker for Networks/SMTP 11 was designed to make the administrator's life easier. Because of its rule-based interface and tight integration with Windows, fax user administration is almost eliminated. If you use the Email2FAX Gateway, all communication between server and client is via SMTP, making it extremely scalable. Client software can be installed silently, allowing for easy deployment.

Robust, multi-line Windows fax server

GFI FAXmaker includes a native Windows fax server that runs as a service and does not require a dedicated computer. GFI FAXmaker has been optimized to take advantage of the stability and security features unique to Windows NT/2000/2003/XP. It also supports the Windows 2000/2003 modem drivers for wider hardware support. Four fax lines are supported as standard, which can be expanded to up to 32 lines per fax server using fax boards or active ISDN cards.

Native ISDN support

GFI FAXmaker natively supports ISDN, allowing you to use inexpensive active ISDN cards and have multi-line faxing and inbound routing at a fraction of the price of using multi-line fax boards.

Support for Windows 2000/XP/2003 fax drivers

GFI FAXmaker can use the Windows 2000/XP/2003 fax drivers, which means that it can share a modem with another communications application such as RAS. The Windows fax drivers also offer 2D faxing (faster fax transmission) and wider modem support.

Automated fax delivery/inbound fax routing

GFI FAXmaker can automatically route incoming faxes to the user's mailbox through one of four methods: CSID, DID/DTMF, OCR or line routing. CSID determines the recipient based on the fax ID; DID/DTMF works on the basis of the dialed number (requires DID trunks or ISDN); OCR works by searching for names and keywords in a fax; and line routing allows faxes to be routed based on the line they were received on. Faxes can also be manually routed, or assigned to a network printer per installed fax port.

SMS gateway

The GFI FAXmaker SMS gateway allows for centralized sending and receiving of SMS messages. SMS messages can either be sent via an Internet-based SMS service or alternatively via a mobile phone or PCMCIA mobile card. The SMS gateway can also be used for administrative alerts, for example, to notify an administrator of critical system outages or application problems. Any email-enabled application can send SMS messages via the GFI FAXmaker SMS gateway. A central log of SMS messages permits the control of SMS use.

Receive faxes in PDF format

GFI FAXmaker for Networks/SMTP 11 allows faxes to be received in PDF, permitting users to view faxes in their PDF viewer and forward them to external parties (who do not have a GFI FAXmaker viewer). Faxes in PDF format are also easy to integrate with document management and text archival systems.

Remote user administration & fax server monitoring/administration

GFI FAXmaker allows you to configure the fax servers and users remotely, greatly easing the administrative task. Additionally, the fax server status and job queue can be viewed from a remote machine using the fax server monitor.

Junk fax filter

GFI FAXmaker includes a junk fax filter that can auto-delete spam faxes on the basis of sender number.

Email-to-fax gateway

GFI FAXmaker for Networks/SMTP also includes a full SMTP fax gateway, offering users the possibility to use an email client, such as Outlook or Notes, to send and receive faxes. Users can also utilize the GFI FAXmaker client.

Application integration

In addition to the NetPrintQueue2FAX feature, GFI FAXmaker has an API that allows users to send faxes programmatically by submitting a text file with recipient information in a designated directory, which GFI FAXmaker automatically scans and faxes out. GFI FAXmaker also includes a COM interface, which allows your application to specify the fax number automatically.

Other features:

- Auto print faxes on different network printers based on routing rules
- Call accounting: Analyze fax costs using Microsoft Excel
- HP Digital Sender support: Easily fax paper documents via GFI FAXmaker
- Fax archiving.

You're in good company...

Many leading companies have chosen GFI FAXmaker for Networks/SMTP. Here are just a few: Kawasaki Construction Machinery Corp. of America, NASA Goddard Space Flight Center - The Hubble Space Telescope Project, DHL Hungary, Philips Business Communications, and many more.

Reviews



Product of the Year 2003 - Technology Marketing Corporation's Communications Solutions Magazine named GFI FAXmaker for Networks/SMTP 11 as a Product of the Year winner for 2003.

- *Communications Solutions Magazine, February 2004*



Product of the Year 2002 - Poland's leading IT magazine, PC Kurier has selected GFI FAXmaker for Networks/SMTP 10 as product of the year in the network software category.

- *PC Kurier, January 2003*



Product of the Year 1999 - Internet Telephony Magazine honored GFI FAXmaker for Networks/SMTP with the 1999 Product of the Year award.

- *Internet Telephony Magazine, January 2000*

System requirements

- For fax server machine: Windows 2003, 2000 or XP.
- For the Email2Fax Gateway: Lotus Notes, Windows 2003 POP server, VPOP3, Mdaemon, Visnetic, Kerio, FirstClass and many other SMTP/POP3 mail servers.
- A professional fax device: A Brooktrout TR 114, TR 1034 or Trufax fax board, an EICON DIVA PRO/SERVER fax card or an AVM active fax card. You can use class 2 or 2.0 fax modems using either the Microsoft or the GFI fax modem drivers, although we strongly recommend using one of the fax devices listed above.

Download your evaluation version from <http://www.gfi.com/ffn/>

GFI Software Ltd UK
Unit 2, St. John's Mews
St. John's Rd, Hampton Wick
Kingston-upon-Thames
Surrey KT1 4AN, UK
Tel +44 (0) 870 5370
Tel +44 (0) 870 5377
sales@gfi.co.uk

GFI Software USA, Inc.
15300 Weston Parkway
Suite 104
Cary, NC 27513
USA
Tel +1 (888) 243-4329
Tel +1 (919) 388 5621
sales@gfiusa.com

GFI Software GmbH
Bargkoppelweg 72
22145 Hamburg
Germany
Tel +49(0) 700306810 00
Fax +49(0) 700306810 10
sales@gfisoftware.de

GFI Asia Pacific Pty Ltd
83 King William Road
Unley 5061
South Australia
Tel +61 8 8273 3000
Fax +61 8 8273 3099
sales@gfiap.com

GFI Software Ltd
GFI House
San Andrea Street
San Swann SGN 05 Malta
Tel +356 2138 2418
Fax +356 2138 3419

